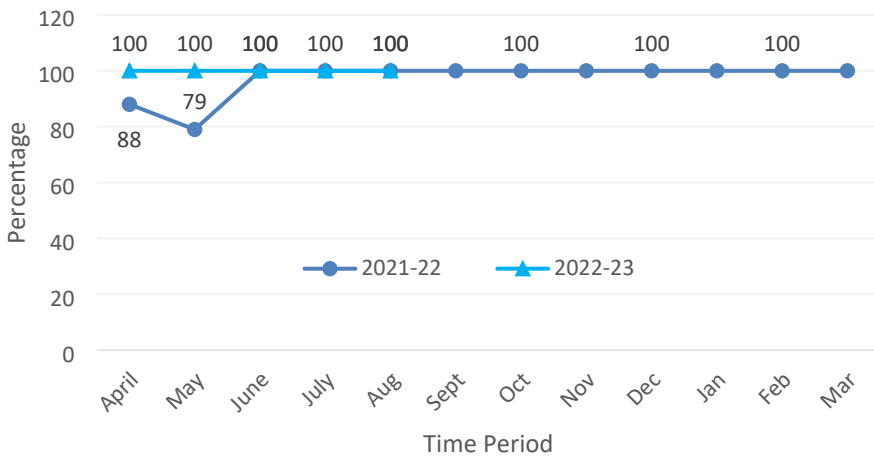


Appendix 9 - 2022/23 Q2 INFRASTRUCTURE, HIGHWAYS PFI AND TRANSPORT

Cabinet Member: Councillor Phil Jordan	
Portfolio Responsibilities:	
<ul style="list-style-type: none"> • Parking Services • Floating Bridge • Harbours 	<ul style="list-style-type: none"> • Concessionary Fares • Subsidised Bus Services • Highways PFI Contract • Highways Authority

Performance Measures

Percentage of Category 1 Emergency Responses within 2 hours (hazardous potholes, fallen trees, street lighting etc.)



Aim: 100 percent Category 1 Emergency responses within two hours

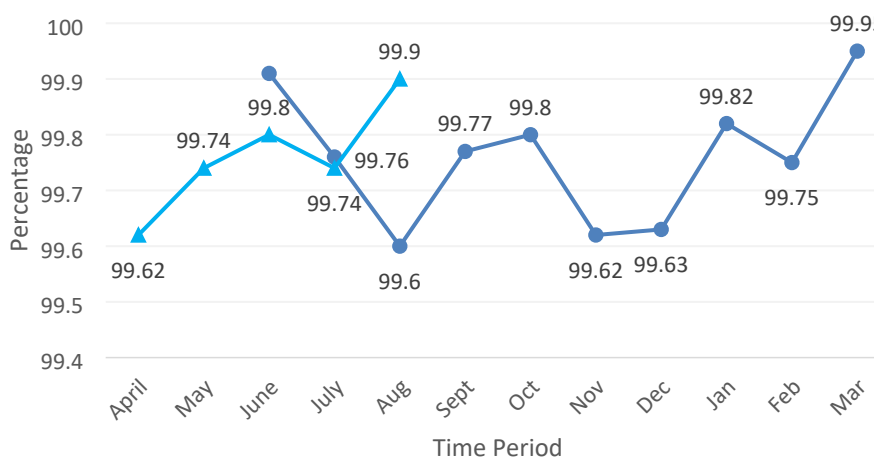
UN Sustainable Development Goal: 9

Most Recent Status:
September 2022
GREEN

Previous Status:
June 2022
GREEN

- Emergency responses have maintained 100 percent timeliness since the end of Quarter 1 2021-22.
- Category 1 defects require remedial action within 2 hours to ensure the highway remains safe. 2-hour defects may include:
 - Potholes
 - Fallen Trees / Branches
 - Damaged Street furniture (vandalism or vehicular collision)
 - Street Light outage
 - Damaged Kerbing
 - Damaged Tactile Crossing

Percentage of highways inspections undertaken (Sec 58 Highways Act Compliance)



Aim: 100 percent of highways inspections undertaken

UN Sustainable Development Goal: 9

Most Recent Status:
September 2022
GREEN

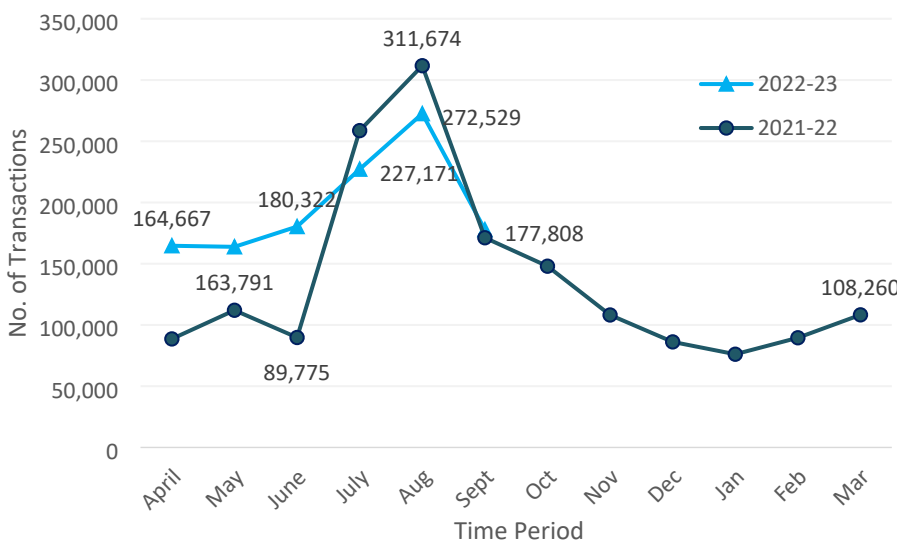
Previous Status:
June 2022
GREEN

- Currently IWC audits a percentage of Island Roads inspections to ensure the Island Roads District Stewards are identifying and rectifying defects in line with code of practice and contractual requirements.
- There were two inspections not done on time and this relates to two roads that require further investigation as these are routinely behind schedule.
- Island Roads had a target of 2,094 in August and have undertaken 2,092 in the timeframe expected. The average number of safety inspections per month is 2,102 with an average performance of 99.73%.

Number of public transport users

- **Aim:** Increase in number of public transport users
- **UN Sustainable Development Goal: 9**
- We are in the process of formalising a non-disclosure agreement with South Western Railways for data related to Islandline usage, so there is a delay in obtaining this data until the process is concluded
- We are awaiting an update from ferry service providers as relates to cross-Solent travel, and this is currently being followed up by the Highways and Transport Client team.

Car parking utilisation



Aim: Increase in car parking utilisation

UN Sustainable Development Goal: 9

Most Recent Status: September 2022

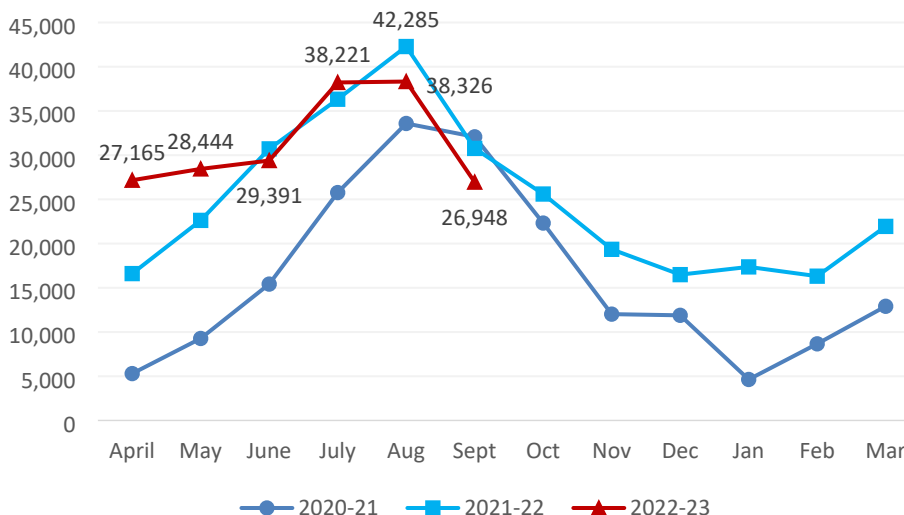
GREEN

Previous Status: June 2022

AMBER

- Quarter 2, while not having matched the high usage level during the same period last year, is now above target for the first time this year with parking income, excluding penalties, equalling £2,784,639 (the target for this point in the year was £2,779,446).
- This increased parking is likely impacted by the trial of one-hour free parking in Newport
- Trends suggest that we are likely to see a drop off in quarter 3 as we exit the summer months and the increased tourist traffic associated with the period

Floating Bridge Number of Foot Passengers



Aim: Increasing number of foot passengers

UN Sustainable Development Goal: 9

Most Recent Status: September 2022

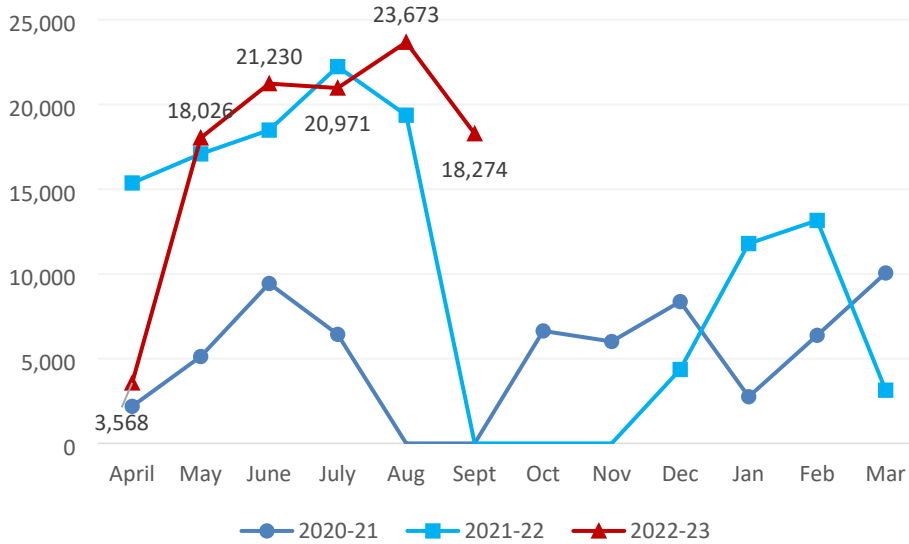
Monitoring Measure Only

Previous Status: June 2022

Monitoring Measure Only

- Quarter 2 saw a steep incline in the number of foot passengers using the floating bridge as is normal over the summer months due to increased tourism on the island, however foot traffic did not match the level for the same period last year (109,375 for quarter 2 of 2021-22 against 103,495 for 2022-23)
- There was minor service suspension during July due to staff shortages, but for August the bridge was fully operational.
- Barring unforeseen any circumstances, trends suggest that we will expect to see a decrease in numbers over quarter 3

Floating Bridge Number of Vehicles



Aim: Increasing number of vehicles

UN Sustainable Development Goal: 9

Most Recent Status: September 2022

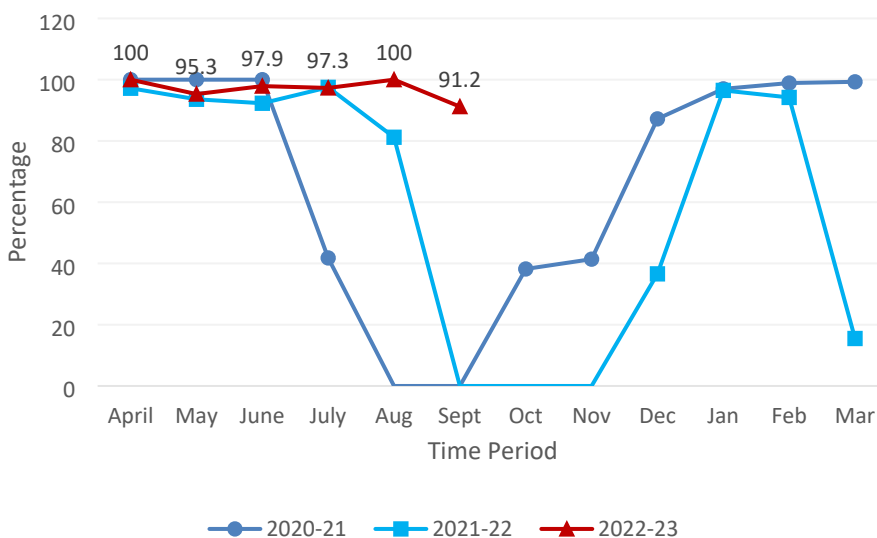
Monitoring Measure Only

Previous Status: June 2022

Monitoring Measure Only

- The total number of vehicles seen during quarter 2 was 62,918 approximately 21,300 higher than in the same period in 2021-22 (41,600) while the bridge was out of service to vehicles between September and November.
- There was minor service suspension during July due to staff shortages, but for August the bridge was fully operational. During September service was suspended due to maintenance for one day, and for three days due to an electrical fault.
- It is expected that there will be a drop in floating bridge utilisation over quarter 3 as we exit the summer period.

Floating Bridge hours operated as a percentage of scheduled hours



Aim: High percentage of hours operated as a proportion of scheduled hours

UN Sustainable Development Goal: 9

Most Recent Status: September 2022

Monitoring Measure Only

Previous Status: June 2022

Monitoring Measure Only

- The floating bridge was operational for an average 96 percent of its scheduled hours during quarter 2, which is higher than during the same period last year (89.35 percent).
- Staff shortages were responsible for a minor service disruption in July, but the service has maintained full functionality throughout August. An electrical fault caused service suspension from 12:30 28th September until 14:00 1st October.

Service Updates - Key Aspirations and Ongoing Business

The below activity supports UN Sustainable Development Goal 9:

The mediation agreement for the contract dispute around Floating Bridge 6 has been successfully concluded and the Gateway 5 Review action plan has been fully delivered. A report setting out the options for resolving issues with chain clearances and vessel deviation were submitted to the Solent Local Enterprise Partnership.

The shortlisted options are:

- Chain system alterations
- Thrusters
- Continued use of the push boat

The replacement of Floating Bridge 6 with a new vessel remains a possible fall-back option.

On the basis that the Department of Transport (DfT) deadline for an Enhanced Bus Partnership has been removed and no funding allocated to the Isle of Wight, focus has shifted to the DfT Local Transport Fund requirements to have ongoing Network Review meetings with local bus operators, ahead of any decisions in respect of amendments to local bus services in April 2023. This is ongoing and the latest meeting held on 12 October.

We have received legal advice both on the Partnership document and the associated non-disclosure agreement, as such the intention is to have the draft revised accordingly, statutory consultation undertaken and for the final draft to be ready for Cabinet as soon as possible.

Major schemes at St Mary's, St Georges Way and Smallbrook have been completed, and other smaller capital schemes have been delivered, with the primary focus on safety. The next steps are to continue with commissioning other capital schemes which have been proposed in relation to drainage, bus infrastructure and accessibility. A summary report shall be produced to outline the schemes delivered, underway and due to be commissioned by November.

The completed draft of the Local Transport Plan (LTP) was issued to the project team in September to enable an initial review. However, due to the ongoing delay to the Department for Transport's guidance for new Local Transport Plans it has been agreed at the Major Highways Project Board, that further development of the LTP is paused. It was agreed that the risk was significant as the guidance could require the LTP to be redrafted and that if this was following public consultation, that this could mean that the consultation will need to be re-run at significant additional cost and delay.

Whilst we await the guidance, we will

- Share the draft with further colleagues internally for their input. This will cover both colleagues from Planning and the Climate & Environment Teams.
- Arrange graphic design input and arrangements for public consultation with colleagues in Comms, Media, and Graphics Design Team
- Provide a briefing and presentation to Cllr Jordan as Portfolio Holder, prior to Cabinet.

A draft report around potential improvements to the local traffic arrangements in the Undercliff area has been completed and Highways Team members have been to site to look at constraints and options for the community, but this work is on hold while the issues around the new undercliff footway partial closure are clarified and if possible resolved.

Strategic Risks

Failure of the Highways PFI contract resulting in significant financial and operational disruption for the council and its residents

Assigned to: Director of Neighbourhoods

Inherent score	Target score	Current score
16 RED	5 GREEN	7 AMBER
Previous scores		
Jul 22	Mar 22	Nov 21
7 AMBER	8 AMBER	8 AMBER
No change in risk score		